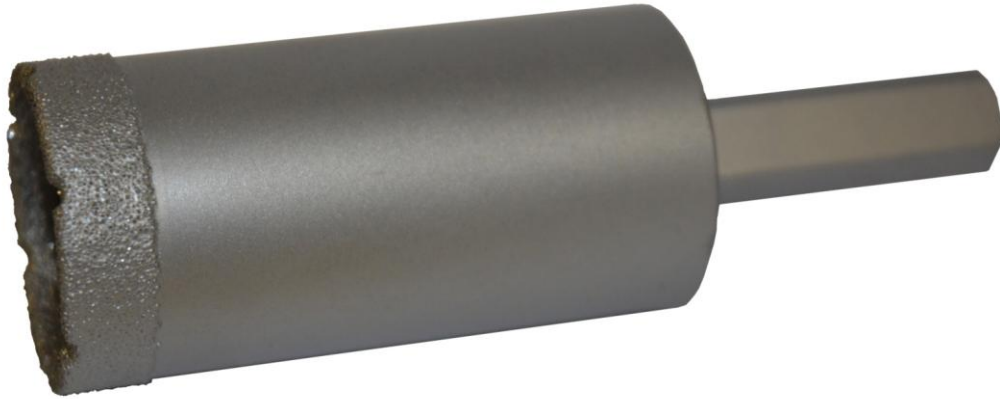




Vacuum Brazed Core Drills – Straight Shank

Buy our products online at www.asahi-diamond.com.au



Brazed Diamond Core Drills are designed to cut marble, ceramic tile and other soft stones. They are also capable of cutting porcelain.

Ideal for use when hand drilling on site with a pistol drill. Brazed Core Drills can be used both wet and dry. We recommend using wet to achieve optimum results and for a longer tool life.

| Diameter | | Stock Code |
|----------|--------|------------|
| (mm) | (in.) | |
| 6 | 1/4" | 1129 |
| 8 | 5/16" | 1132 |
| 10 | 13/32" | 1135 |
| 12 | 1/2" | 1146 |
| 15 | 5/8" | 1149 |
| 20 | 25/32" | 1158 |
| 35 | 1 3/8" | 1175 |

